



17 Scarcroft Road
York, YO23 1NE
Guide Price £500,000

A fabulous large corner period forecourted town house, set over three floors with three good sized bedrooms in this highly sought after location close to the popular Bishopthorpe Road shopping parade yet within walking distance of the Railway Station and City Centre. The property provides large living accommodation that is tastefully presented throughout, has the benefit of gas central heating and comprises: entrance hallway, large lounge with bay window and feature fireplace, separate sitting/dining room, 17'10 kitchen with full range of fitted units, first floor landing, two first floor double sized bedrooms, one with additional shower, good size bathroom/WC, staircase to second floor bedroom three with dual aspect. To the outside is a delightful walled rear courtyard with gate to footpath. An internal viewing of this superb period home is strongly recommended.

Entrance Hall

UPVC entrance door, stairs to first floor, panelled door to;

Lounge

15' x 11'10 (4.57m x 3.61m)

UPVC bay window to side, UPVC window to front, ceiling rose, coving, picture rail, wood panelling, feature fireplace with surround, television point, power points.

Dining Room

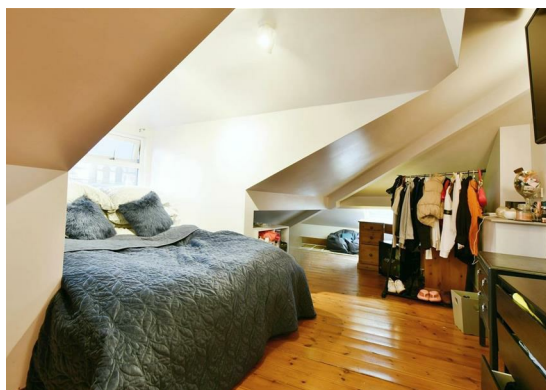
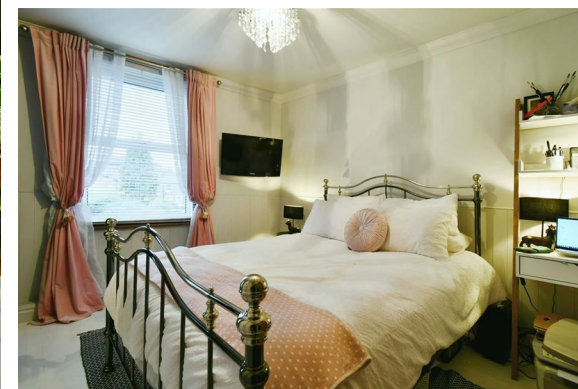
15'5 x 11'4 (4.70m x 3.45m)

UPVC window to front, UPVC french doors to courtyard, ceiling rose, coving, open fire, understairs cupboard, vinyl flooring, radiator, power points.

Kitchen

17'10 x 8'5 (5.44m x 2.57m)

UPVC french doors to courtyard, UPVC window to front, fitted wall and base units with oak ocuntertop, belfast sink unit with mixer tap, fitted gas hob and electric oven, space and plumbing for other appliances, double radiator, power points,





First Floor Landing

Single radiator, carpets, power points.

Bedroom 1

15'1 x 11'10 (4.60m x 3.61m)

UPVC window to two aspects, radiator, carpets, storage cupboard, radiator. Door to;

En-Suite

Walk-in corner shower unit, opaque UPVC window to front.

Bedroom 2

11'10 x 11'4 (3.61m x 3.45m)

UPVC window to front, radiator, storage cupboard, carpet, power points.

House Bathroom

11'4 x 8'5 (3.45m x 2.57m)

Two UPVC windows to front, large panelled bath, double sink unit, low-level WC, bespoke fitted storage, floorboards

Second floor

Eaves storage, door to;

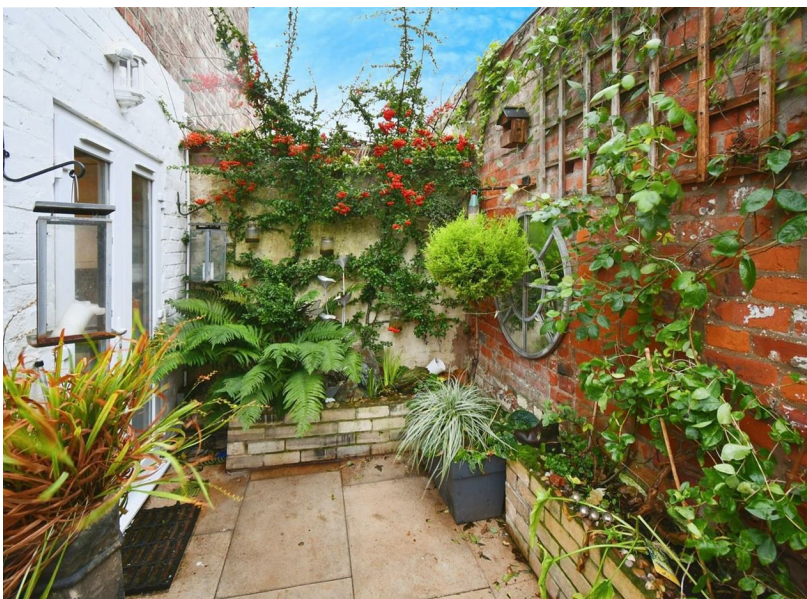
Bedroom 3

21 x 8'4 (6.40m x 2.54m)

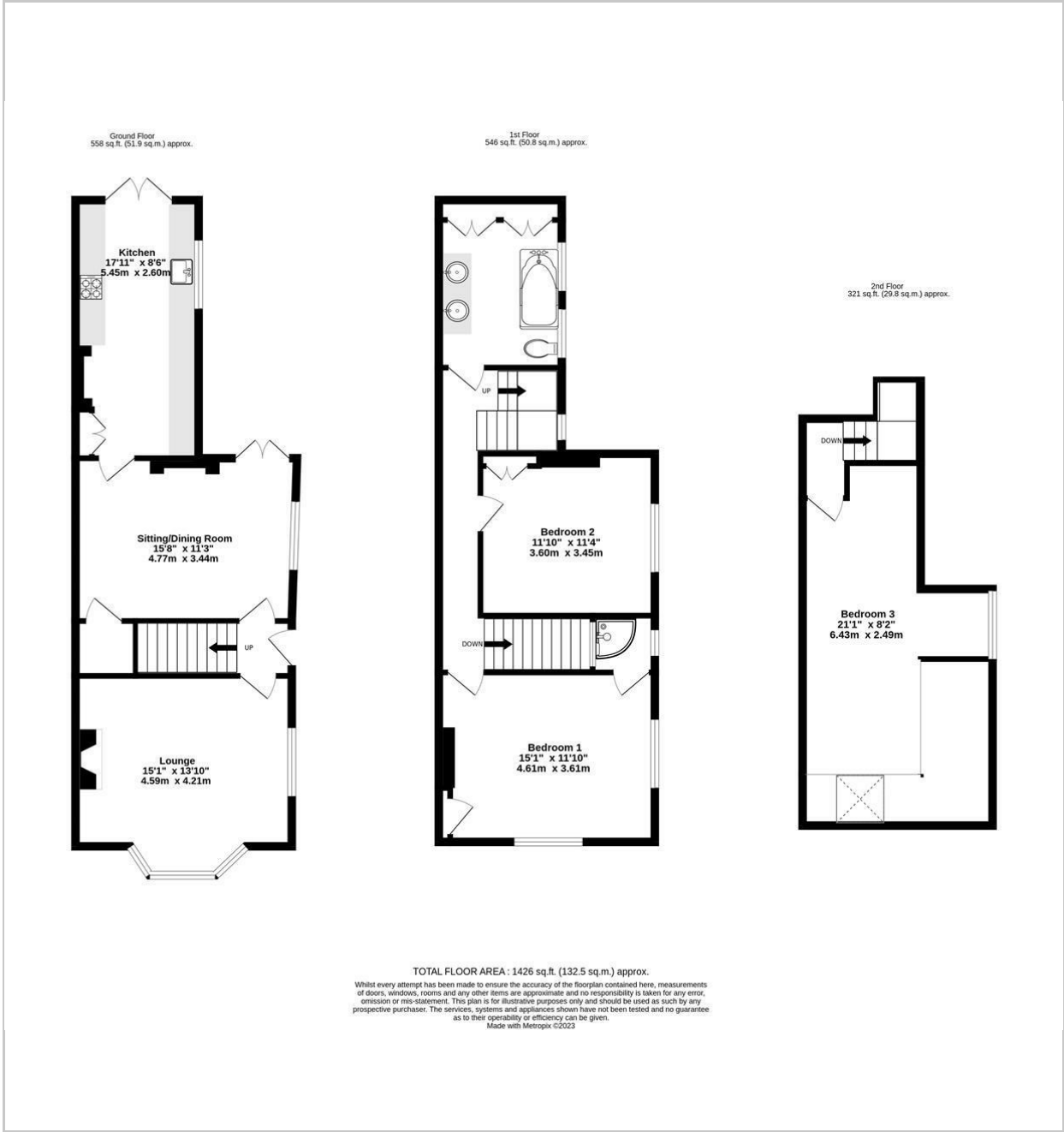
UPVC window to front, Velux to side, radiator, floorboards, power points.

Outside

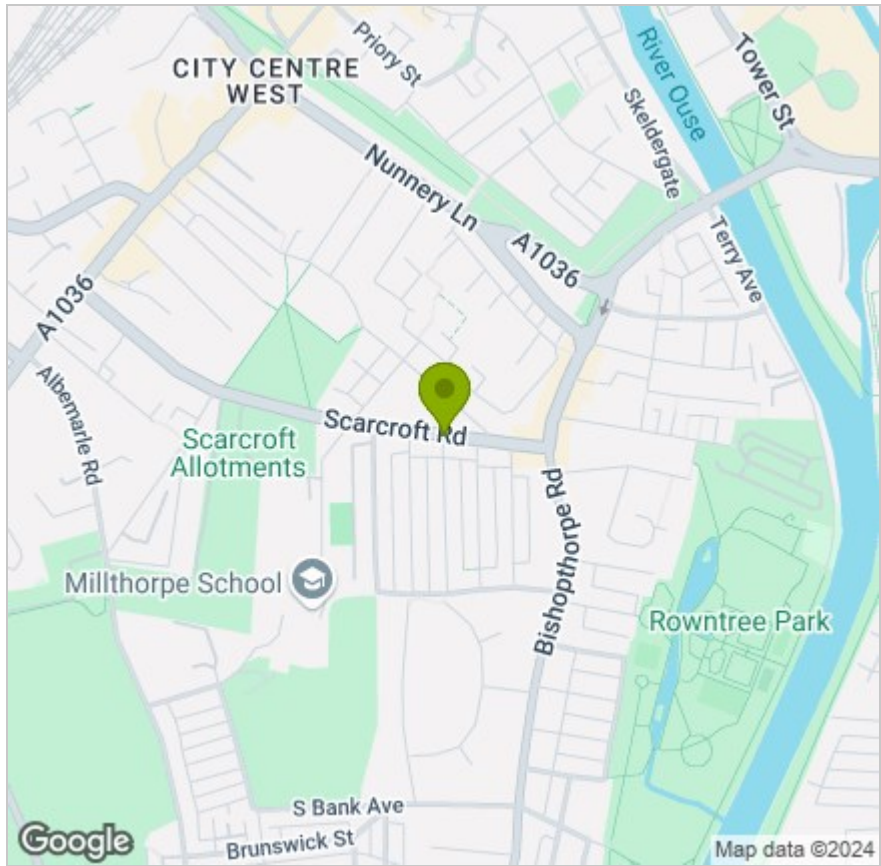
Front forecourt, rear walled courtyard, with door to pathway.



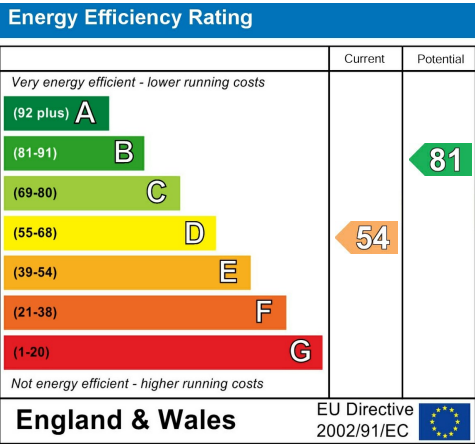
FLOOR PLAN



LOCATION



EPC



These particulars, whilst believed to be accurate are set out as a general outline only for guidance and do not constitute any part of an offer or contract. Intending purchasers should not rely on them as statements of representation of fact, but must satisfy themselves by inspection or otherwise as to their accuracy. No person in this firms employment has the authority to make or give any representation or warranty in respect of the property.